

EASYquote Disconnected Installation

1. Log into EASYview
2. On the Install EASYquote tab, click the link at the bottom: Install EASYquote

QBE NAU Crop Insurance

Home | My Account | Logout | Help

EASYwriter Pro EASYwriter ONLINE Quoting Company Forms Agent Training EASYmapping EASYview Weather Precision Farming Field Insights

Thursday, June 29, 2017 ADM: 6/16/2017 IMPORT: 6/17/2017 CROP YEAR: 2017 Portal: Agent

Agents Menu

Policy Search
MPCI HAIL

Agent User Reports

- Debt Termination Report
- Hail Statement of Accounts
- MPCI Statement of Accounts
- MPCI Status Report
- MPCI Tracking Policy Status
- Mailing Labels
- Missing APH (2011 or later)
- Missing Accrual
- Policy Listing

Policyholder 1099a

EASYquote

Name: EASYquote
Publisher: NAU Country Insurance Company
Requirements: User must be an Administrator on their machine, or have access to an administrator account in order to install EASYquote.

Note: NAU Country Insurance Company will only support clients with:

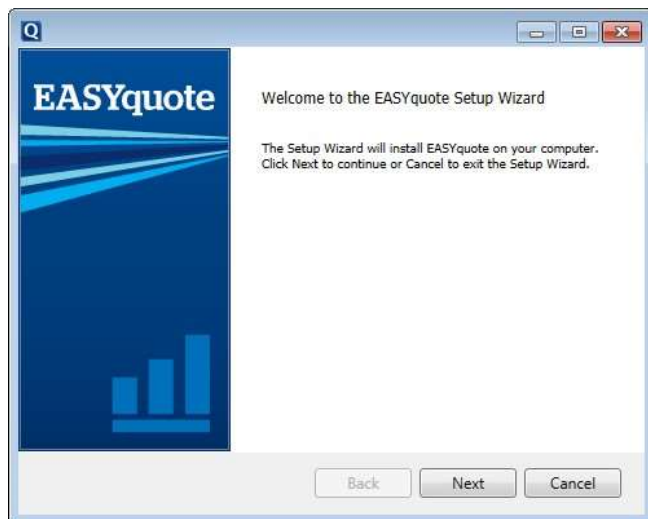
- x86 CPU or compatible
- Windows 7 or higher
- Internet connection with access to the following hosts/ports (for updates only)
 - www.naucountry.com:8080
 - www.naucountry.com:443

The following prerequisites are required and will be installed along with the program:

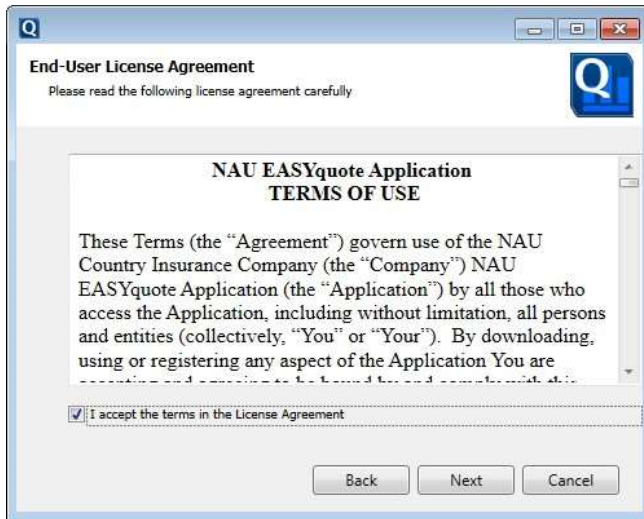
- Microsoft SQL Server Express 2012
- Microsoft .NET Framework 4.6.1

[Install EASYquote](#) Click the link to the left to install EASYquote and prerequisite components, or to reinstall EASYquote, or prerequisite components.

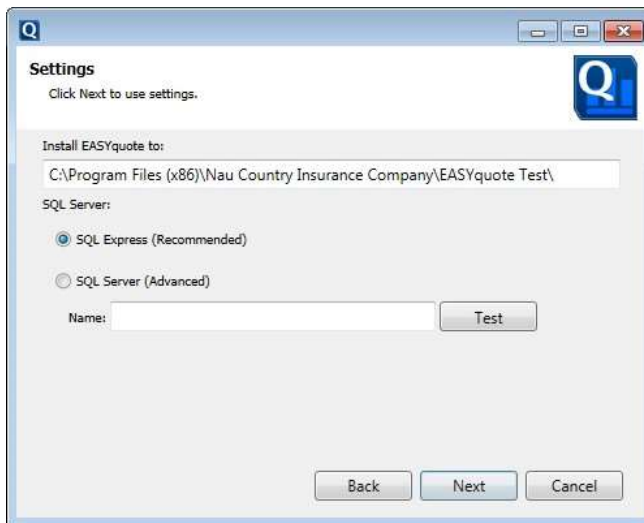
3. Click Run
4. Click Run
5. Click Next



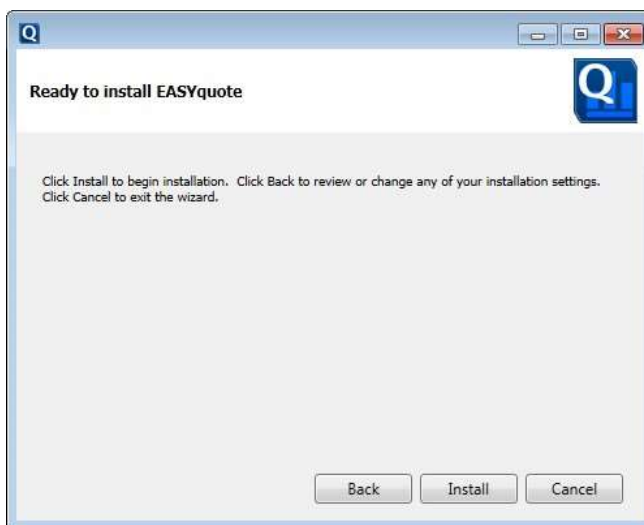
6. Click the EULA agreement checkbox and Next



7. Click Next



8. Click Install



9. Click OK for any warnings you may receive.

10. The disconnected EASYquote system should now be available in your Start menu under All Programs > NAU Country Insurance Company > EASYquote

11. Enter your user name, password, and quoting year.

Quoting Software User Login

User Name:

Password:

Year:

[Proxy Settings](#)

Login Cancel

Copyright © 2013 NAU Country

12. Update your system

Data Updates Available

Newer versions of the following data is available. Click Update to download and install the newer version. Items in Red are required updates. All other items are optional updates. However it is recommended you update these items at this time.

Description	Installed Version	Available Version
2013 Policy Data		7/3/2013 9:59:34 AM
2013 Policy Data		7/2/2013 2:20:52 PM
2013 MPFI/HAIL Rate Data	Not Installed	07-02-2013 07:48 AM / 07-03-2013 09:00 AM
2012 MPFI/HAIL Rate Data	Not Installed	07-01-2013 09:13 AM / 07-01-2013 02:19 AM
2013 Quote Data (Price/Factors, General Rate Data, etc)	Not Installed	Update Available
2012 Quote Data (Price/Factors, General Rate Data, etc)	Not Installed	Update Available

Update Quit View Release Notes

13. Choose the states to download (Employees will also select an Agency to download)

Policy/Rate Download

Renewance Year: 2013

Policy Selection

Download? Yes No

Rate/State Selection

- AL - Alabama
- AR - Arkansas
- AZ - Arizona
- CA - California
- CO - Colorado
- CT - Connecticut
- DE - Delaware
- FL - Florida
- GA - Georgia
- IA - Iowa
- ID - Idaho
- IL - Illinois
- IN - Indiana

Additional Data:

- Price and Factors
- MPD Configuration Data
- HASS Data
- ADN Screen Data

Options

Force Update All

Download Quit

2013 POLICY Update File (2 of 7)

Importing data file. Please wait



14. After the download completes, the main quoting screen will appear.